

# CHILDREN'S CRISIS OUTREACH RESPONSE SYSTEM

The YMCA philosophy focuses on developing caring relationships and meeting the needs of the whole child or young adult and not simply solving individual problems. As is true in all YMCA programs, the focus is not on an individual's problems, but on identifying strengths and providing the resources to help the person build upon those.

## OUR MISSION:

*BUILDING A COMMUNITY  
WHERE ALL PEOPLE,  
ESPECIALLY THE YOUNG,  
ARE ENCOURAGE TO  
DEVELOP THEIR FULL  
POTENTIAL IN SPIRIT,  
MIND AND BODY.*

YMCA Family Services and Mental Health  
909 Fourth Avenue • Seattle, WA 99104  
206.382.5340



## SUPPORTING SUCCESS IN OUR COMMUNITY

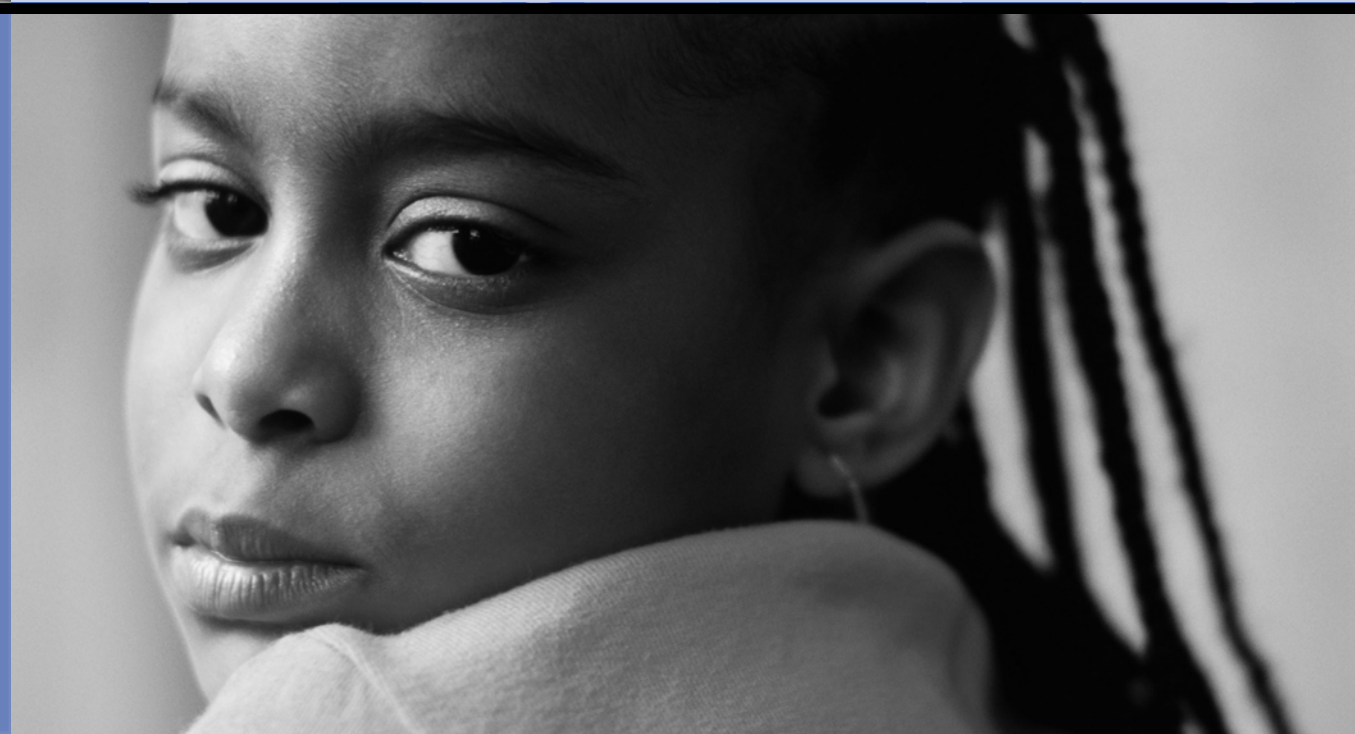
The Children's Crisis Outreach Response System (CCORS) provides comprehensive crisis services to children, youth and families in King County. These services are provided free of charge to children, youth and families through funding by the King County Mental Health, Chemical Abuse and Dependency Services Division (MHCADSD). King County has contracted with YMCA Family Services and Mental Health to deliver these services.

*Providing crisis support  
services and access to  
long-term services to help  
families achieve stability and  
prevent future crises.*



**YMCA**  
OF GREATER SEATTLE

We build strong kids,  
strong families,  
strong communities.





## REFERRAL, ADVOCACY & SUPPORT

The Children’s Crisis Outreach Response System is accessed 24-hours a day by calling (206) 461-3222. After delivering initial crisis intervention, we provide additional resources and supports as appropriate and link children, youth and families to natural and formal resources in their community. We encourage the development supportive personal networks. Our goal is to prevent crises from reoccurring, and to promote ongoing family success.

Referrals to community-based mental health agencies, peer support groups and family service programs are a part of our commitment to continued care. We assist in navigating public and private systems, and educate—and advocate for—clients on issues including education, juvenile justice and specialized treatment needs. Our belief is that such advocacy fosters hope, positive change and a shared understanding between staff and families in providing supportive services.

## CRISIS INTERVENTION

The Children’s Crisis Outreach Response System (CCORS) provides 24-hour crisis intervention services for King County children, youth and families designed to fit individual strengths and natural support systems. The focus is on safely containing the crisis and maximizing choices.

To support families with children experiencing a mental health crisis, we deliver a variety of services with immediate response, including mental status exams, suicide risk assessments and links to YMCA and other community resources.

## NON – EMERGENT OUTREACH

Children, youth and families experiencing a mental health crisis may wish to delay crisis intervention and schedule a non-emergent outreach appointment. For families where safety can be maintained in the home until the time of the appointment, crisis services must occur within 48 hours of the family’s initial call to the Crisis Clinic.

CCORS delivers the same services to children, youth and families during non-emergent outreach appointments as during immediate crisis interventions. The appointment location is based on the needs of the family, and could occur in the child’s home, school or at the YMCA.

## CRISIS STABILIZATION PLACEMENTS

Designed as a short-term intervention to help children, youth and families through crisis, stabilization beds are available for children needing immediate out-of-home placements who lack family resources or natural supports to safely rely upon.

YMCA Family Services and Mental Health works with over 20 families in King, South Snohomish and North Pierce Counties. The YMCA requires these parents to complete extensive training to support their work with children. These highly skilled care givers provide stable home environments for children in crisis and can manage children exhibiting serious behavioral or emotional problems.

Crisis stabilization beds are available for up to 72 hours after a crisis to provide necessary separation while supports can be put in place to reunify children with their families. Screening for voluntary placements can be accessed through the Crisis Clinic at (206) 461-3222.

FOR CHILDREN’S CRISIS OUTREACH SERVICES, CALL THE CRISIS CLINIC AT (206) 461-3222